

# We Have Florida 100% Covered



**100** % Florida Population

---

**67** All Title Plant Counties

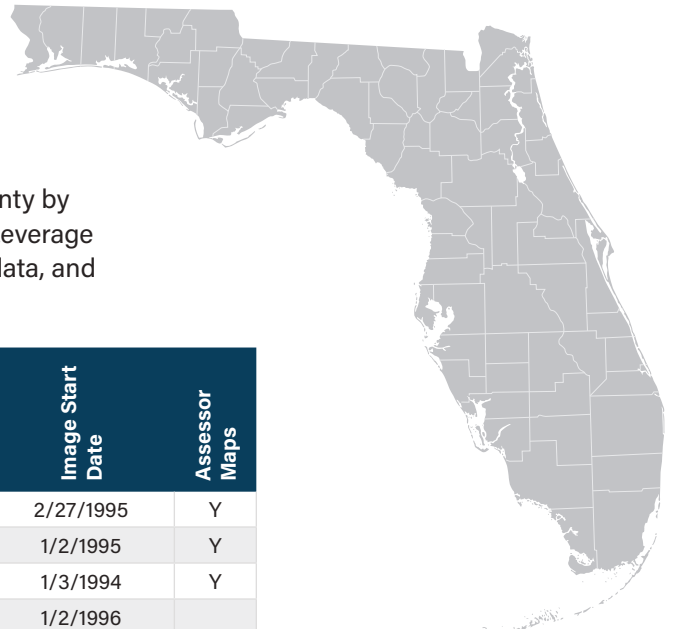
---

**100** % Fully Automated

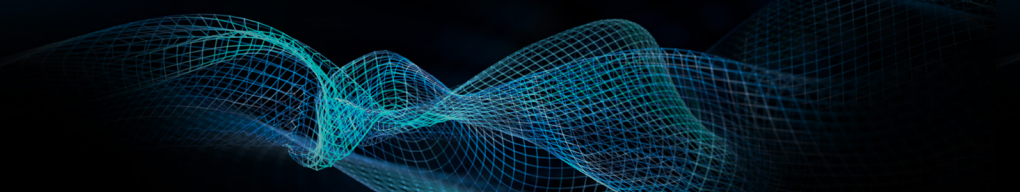
**With unmatched county coverage and historical title data that dates back 30 years, DataTrace delivers fully automated title, tax & data solutions in Florida.**

Powered by the industry’s largest geographic title plant footprint, DataTrace operates digital title plants in all 67 counties, covers 100% of the state population and maintains over 8.4 million recorded document images related to Florida properties alone. We make it easier and more efficient for you to automate title search and examination across all state counties and nationwide.

The DataTrace Geographic Coverage Resource Guide provides a county by county overview of the full DataTrace title plant coverage in Florida. Leverage this resource guide for county coverage across title information, tax data, and recorded document images.



Counties	Digitized Back Plant Date	Grantor/Grantee Plant Date	Geographic Plant Date	Yax SYaYus Repor'ys	Image Start Date	Assessor Maps
Alachua		8/21/1971	8/3/1981	Y	2/27/1995	Y
Baker	1933		1/2/1985	Y	1/2/1995	Y
Bay	1884		1/3/1983	Y	1/3/1994	Y
Bradford		1/1/1986	12/17/2007	Y	1/2/1996	
Brevard	1957		1/2/1981	Y	3/12/1957	Y
Broward	1884		1/3/1978	Y	1/3/1978	Y
Calhoun		9/21/1982	12/17/2007	Y	3/4/1963	
Charlotte	1921	1/1/1977	1/1/1994	Y	9/27/1972	Y
Citrus	1953		1/2/1980	Y	1/2/1979	Y
Clay		1/1/1984	12/17/2007	Y	1/13/1984	Y
Collier	1923		4/1/1981	Y	1/10/1953	Y
Columbia			1/2/1986	Y	5/28/1997	



Counties	Digitized Back Plant Date	Grantor/ Grantee Plant Date	Geographic Plant Date	Yax S\YaYus ReportYs	Image Start Date	Assessor Maps
De Soto		1/2/1975	1/1/1994	Y	1/2/1975	Y
Dixie		1/3/1984	12/17/2007	Y	1/2/1990	Y
Duval	1955		1/1/1975	Y	9/12/1979	Y
Escambia	1874		4/1/1982	Y	1/2/1962	Y
Flagler			9/1/1988	Y	1/2/1975	Y
Franklin			8/4/1986	Y	1/2/2002	
Gadsden		1/1/1985	12/17/2007	Y	5/14/1957	Y
Gilchrist			12/2/1982	Y	1/3/1995	Y
Glades		1/3/1989	12/17/2007	Y	1/4/1954	Y
Gulf		1/2/1973	6/14/2001	Y	1/2/2003	Y
Hamilton		1/3/1984	12/17/2007	Y	5/14/1996	Y
Hardee		1/3/1984	12/17/2007	Y	12/29/1998	Y
Hendry	1953	10/1/1980	1/1/1994	Y	2/13/1990	Y
Hernando	1878	1/3/1983	1/1/1994	Y	10/15/1953	Y
Highlands	1921	6/17/1982	1/1/1994	Y	1/24/1983	Y
Hillsborough			4/1/1959	Y	1/2/1986	Y
Holmes		5/14/1979	12/17/2007	Y	6/12/1981	
Indian River			1/2/1980	Y	1/2/1980	Y
Jackson		1/1/1990	12/17/2007	Y	1/2/1964	Y
Jefferson	1820	11/1/1958	12/17/2007	Y	1/3/1994	
Lafayette		5/21/1984	12/17/2007	Y	1/4/1994	
Lake		1/2/1957	5/1/1992	Y	1/2/1988	Y
Lee		1/2/1974	11/9/1989	Y	12/7/1984	Y
Leon		6/1/1961	1/3/1984	Y	1/3/1983	Y
Levy		1/1/1986	12/17/2007	Y	1/2/2001	Y
Liberty		1/1/1990	12/17/2007	Y	1/2/1990	Y
Madison		1/1/1990	12/17/2007	Y	1/3/2000	Y
Manatee		1/3/1978	1/4/1988	Y	12/6/1977	Y
Marion	1929		12/7/1981	Y	1/22/1959	Y
Martin	1912	1/1/1986	1/1/1994	Y	3/26/1958	Y
Miami-Dade	1912		1/2/1974	Y	1/2/1974	Y
Monroe	1954		1/7/1987	Y	12/23/1986	Y
Nassau			6/9/1972	Y	1/2/1970	Y
Okaloosa			1/3/1983	Y	1/3/1983	Y
Okeechobee		12/1/1970	1/1/1994	Y	1/4/1999	Y
Orange	1863	8/12/1955	10/16/1979	Y	3/2/1883	Y
Osceola			1/3/1986	Y	5/24/1988	Y
Palm Beach		1/2/1968	1/1/1978	Y	1/3/1978	Y
Pasco			1/2/1974	Y	12/29/1986	Y
Pinellas		1/2/1957	1/1/1985	Y	9/30/1987	Y
Polk	1927	1/2/1973	6/1/1987	Y	3/3/1981	Y
Putnam		10/3/1983	12/17/2007	Y	3/1/1996	Y

# Florida State Title Plant Geographic Coverage

Counties	Digitized Back Plant Date	Grantor/Grantee Plant Date	Geographic Plant Date	Yax S/YaxUs Report's	Image Start Date	Assessor Maps
Saint Johns	1820		1/2/1985	Y	1/2/1961	Y
Saint Lucie	1904		6/1/1976	Y	12/31/1979	Y
Santa Rosa	1889		1/4/1982	Y	1/3/1961	Y
Sarasota	1921		1/2/1985	Y	1/27/1967	Y
Seminole	1913		10/30/1980	Y	1/4/1954	Y
Sumter	1929	1/1/1984	1/1/1994	Y	1/2/1958	Y
Suwannee		1/20/1976	12/17/2007	Y	1/3/2000	
Taylor		1/1/1990	12/17/2007	Y	12/22/1995	Y
Union		1/1/1983	12/17/2007	Y	1/2/1992	
Volusia			1/3/1984	Y	1/3/1984	Y
Wakulla			1/2/1990	Y	1/2/1990	Y
Walton	1821		1/2/1976	Y	8/2/1971	Y
Washington			1/2/1990	Y	1/4/2000	Y

## Legend & Terminology

Term	Definition	Advantages / Notes
<b>Geographic Plant</b>	A specific database of county-recorded documents affecting title of real property ownership, indexed specifically by the geographic location of a property and searchable by its APN, legal description or physical address within a county.	Geographically indexed plants streamline the title search process by indexing all recorded documents, deeds, judgments, liens affecting the title of a specific property, saving valuable time. The traditional standard in the title industry, geographic plants are the most desired plants for verifying chain of title.
<b>Images</b>	Digital images of documents officially recorded in a county recorder/clerk's office and affecting the title of real property ownership.	DataTrace's database of over +8 billion recorded document images provide our settlement services clients with the necessary documentation to support their decisions and efficiently complete their files.
<b>* Restrictions</b>	Restrictions to title plant and document access which are imposed by plant owners or state regulations.	Denotes Restricted Data for this database. Please contact your Sales Representative for more details on how to access this dataset.
<b>Tax Source/Tax Status Reports</b>	Nationwide property tax status reporting.	<p>T = TaxSource product is available in this county: TaxSource by DataTrace delivers full national coverage with the most current tax status and rapid results through the latest technology and data resources. Integrations available via DT-API, TitleFlex and DataTrace System (DTS). Please consult with your DataTrace representative for additional information.</p> <p>C = Tax Certificate product (CO, MI, TX) is available in this county: This is an indemnified product created or acquired from source and passed through to the customer.</p> <p>F = Full-service Tax product (CA, AZ, HI, etc.) is available in this county: This is our traditional Full Service, fully indemnified product available in DTS only. (All of these counties also have uninsured Tax Source avail, see above)</p>
<b>Patent</b>	Database contains records going back to the date the county was formerly established in the state.	