

Tax Information Services

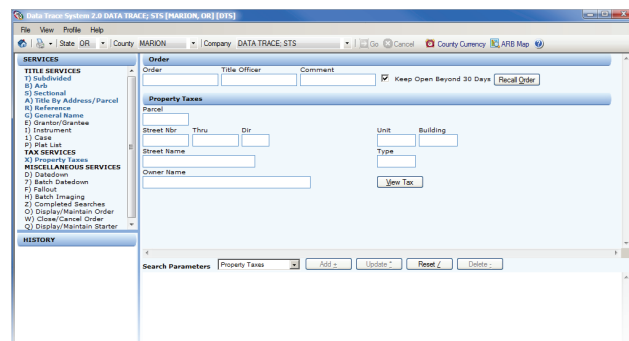
› Including Texas Tax Certifications

Complex Property Tax Research Made Simple

Whether you're researching property tax records for an open order or collecting information for some future use, Data Trace streamlines the process by providing the data and tax-map images you need to close business quickly and confidently.

Drawing from an expansive and fast-growing database that includes hundreds of U.S. counties, Data Trace's Tax Information Service provides access to a parcels latest property tax records, including:

- Assessed values and payment status
- Prior year delinquencies*
- Special improvement district reports*



Using Data Trace's intuitive, easy-to-use interface, you can quickly and easily search by tax ID number, owner name/address, or parcel number system — right from your desktop. From the tax-results screen, you may also retrieve, view and print detailed tax-map images, and in some cases*, view special improvement district reports

for liens not included in general tax bills. With Data Trace, you'll be able to see the big picture and avoid delays and surprises.

Three Flexible & Convenient Tax Service Options

Different title orders have different tax research needs. That's why Data Trace offers a flexible, tiered approach that includes a flexible range of quality tax-service options:

- **BASIC Tax Service:** Provides assessed values and property identification information; available where customers have access to a government service or a tax-service provider.
- **INFORMATION-ONLY Tax Service:** Retrieves current tax year payment status and prior year delinquencies*. Data is frequently updated with information from multiple jurisdictions and collection entities to ensure data freshness.
- **FULL Tax Service:** Verifies a parcel's tax liability with collection-entity data that's refreshed weekly in most counties. Take tax obligation research to an all-new level with the industry's most comprehensive real estate reporting.

Texas Property Tax Information & Certification Services

Five Star Service for the Lone Star State

They say everything's bigger in Texas, and for our settlement services clients, that includes tax research challenges. Fortunately Data Trace has extensive experience in states like Texas, where tax payment and certification require state-specific knowledge and specialized expertise.

Data Trace makes closing business in Texas quicker and easier than ever. Using our industry-leading system, you may obtain tax certificates for all 254 Texas counties,

*Where available. Consult the most current Title Plant Coverage at DataTraceTitle.com.

including automated certificates for 66 of them. Get accurate, up-to-date information that includes:

- Prior year tax status
- Tax amount due, including total payoff amount
- Tax suit status, including court costs, abstract fees and other related information

When needed, Data Trace also supplies accompanying HOA certificates for areas such as Houston, Austin, San Antonio, Corpus Christi, El Paso and others. For Texas counties where automated certification isn't available, Data Trace's experienced team will manually obtain tax information and build a complete, up-to-date tax certificate that helps you get to closing faster. To provide even greater confidence in your purchase, Data Trace warrants its information by making good on debts that may surface after a transaction has closed.

Updates and Training at No Extra Charge

Texas title pros know that market dynamics are always in flux. But the need for accurate data remains constant and unchanging. That's why our Texas Tax Service includes a full year of tax certificate updates at no extra charge. Use it a little or use it a lot. With Data Trace you get as many updates as you need to ensure up-to-the-minute payment status of every selected parcel.

New staff coming aboard? No problem. Despite being widely used in Texas, our tax information platform may not be familiar to everyone. If introductory or refresher training is needed, just give us a call and a friendly, knowledgeable trainer will provide all the support you need. Team members may also receive free Texas Tax training through Data Trace University, our online, self-paced resource.

Experienced, Responsive and Ready to Help

Our Texas Tax Service and other title customers feel confident in knowing that the Data Trace system is the largest and most innovative of its kind. But in the daily course of business, what they really appreciate is our fast, friendly, personalized service. Data Trace representatives understand your unique title search challenges, especially those surrounding tax certifications. Have a simple question? We're here with answers and easy to reach. Need a rush certificate to close a large deal? Just let us know and we'll speed it right through. Our service philosophy is probably like yours: do what it takes to get the job done.

About Data Trace

Helping Businesses Grow since 1968

Data Trace Information Services, LLC provides advanced real estate title search technology and support services that enable title and settlement services companies to quickly access and search historic documents in hundreds of regional databases through a secure and intuitive interface.

Every day, thousands of title insurance companies rely on Data Trace's innovative technology to open and close more business by delivering title history information, property tax assessment and payment data, document images and property profiles for major U.S. metropolitan areas.



DataTraceTitle.com

[linkedin.com/company/data-trace](https://www.linkedin.com/company/data-trace)
[twitter.com/@datatracetitle](https://twitter.com/datatracetitle)
facebook.com/datatracetitle

800.221.2056

customersupport@datatracetitle.com

200 Commerce, Irvine, CA 92602

© 2015 Data Trace Information Services LLC. All rights reserved.

Data Trace Information Services LLC makes no expressed or implied warranty respecting the information presented and assumes no responsibility for errors or omissions.